

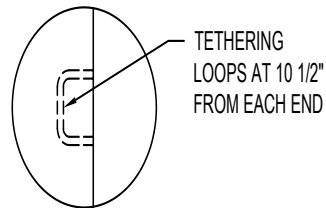
60" X 27" STAINLESS STEEL STEP-IN ANIMAL BATHTUB WITH HAIR CATCHING DRAIN SYSTEM / INTERNAL WELL - RIGHT DRAIN (W60HTY-RH) - DETAIL 1

☒ SELECT DESIRED FAUCET FIXTURE:

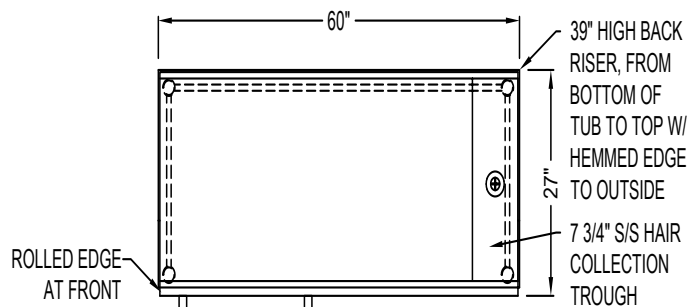
- ☐ QUALITY FIXTURE
- ☐ DELUXE FIXTURE
- ☐ LIGHTWEIGHT QUALITY FIXTURE
- ☐ LIGHTWEIGHT DELUXE FIXTURE

☒ SELECT DESIRED ADDITIONAL PRODUCTS:

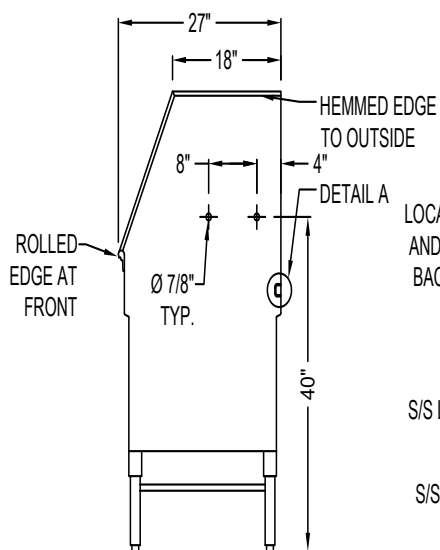
- ☐ DRYING AND BRUSHING TABLE
- ☐ PROFESSIONAL QUALITY PET DRYER



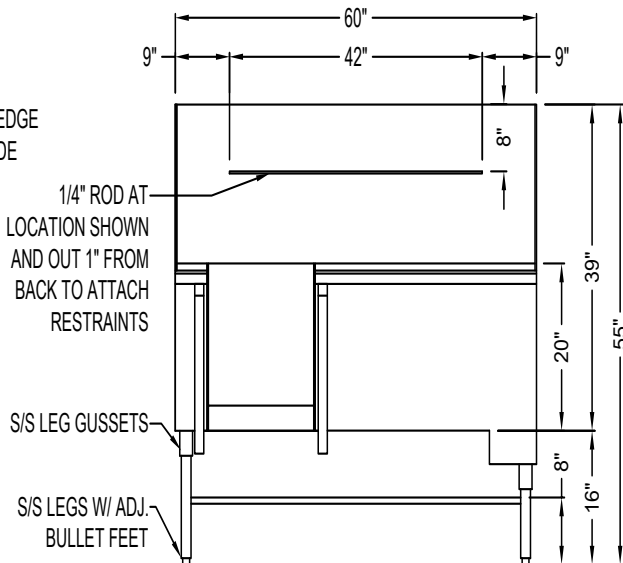
DETAIL A



TOP VIEW



SIDE VIEW



FRONT VIEW